

Product data sheet

ECturn



Electromechanical swing door drive for accessible single leaf doors weighing up to 125 kg

AREAS OF APPLICATION

- Single-action, single leaf, right and left closing doors
- Single-action doors up to 1100 mm leaf width or 125 kg weight
- Entrance and interior doors with moderate access frequency
- Automation of frameless all-glass doors
- Door leaf installation and transom installation
- Barrier-free access

PRODUCT FEATURES

- Opening and closing speed can be individually adjusted
- Electrical latching action which accelerates the door shortly before the closed position
- Low-energy function opens and closes the door with reduced speed, fulfilling the highest safety demands
- Obstacle detection detects an object through contact and stops the opening or closing process
- Automatic reversing detects an obstacle and returns to the opening position
- Push & Go function triggers the automatic drive following light manual pressure on the door leaf
- Drive can be used with guide rail or link arm
- Glass guide rail available for use on glass doors with a glass thickness of 8-10 mm
- Optional rechargeable battery provides maximum safety during a power failure
- Optional radio reception board for wireless activation by radio transmitter

TECHNICAL DATA

Productname	ECturn
Leaf weight (max.) 1-leaf	125 kg
Leaf width (min.-max.)	650 mm - 1100 mm
Reveal depth (max.)	200 mm
Door overlap (max.)	50 mm
Drive type	Electromechanical
Opening angle (max.)	110 °
DIN left	Yes
DIN right	Yes
Transom installation opposite hinge side with link arm	Yes
Transom installation opposite hinge side with roller guide rail	Yes

Transom installation hinge side with roller guide rail	Yes
Door leaf installation opposite hinge side with roller guide rail	Yes
Door leaf installation hinge side with roller guide rail	Yes
Door leaf installation hinge side with link arm	Yes
Mechanical latching action	No
Electrical latching action	Yes
Disconnection from mains	Main switch in the drive
Activation delay (max.)	20 s
Power rating	75 W
Power supply for external consumers (24 V DC)	600 mA
Service temperature	-15 - 50 °C
Air humidity non-condensing (max.)	95 %
IP rating	IP20
Mode of operation	Automatic, Permanently open, Night, Off
Automatic function	Yes
Low-energy function	Yes
function smart swing	No
Servo function	No
Obstacle detection	Yes
Automatic reversing	Yes
Push & Go	adjustable
Operation	Programme switch integrated in the drive, Programme switch TPS
Parameter setting	Control unit, Programme switch DPS
Standard conformity	EN 16005
Smoke switch integrated	No

PART**ECTURN**

Electromechanical swing door drive for accessible single leaf doors weighing up to 125 kg



Designation	Description	Ident-No.	Supply voltage	Leaf width (min.)	Leaf width (max.)
Ecturn	Electromechanical swing door drive for 1-leaf single-action doors	134536	110 - 230 V	650 mm	1100 mm

LINK ARM ECTURN

For transom installation on opposite hinge side or door leaf installation on hinge side for reveal depths of 0 - 200 mm



Designation	Description	Ident-No.	Colour
Link arm ECturn	for reveal depth 90-200 mm	134664	silver-coloured
Link arm ECturn	for reveal depth 0-100 mm	134663	silver-coloured
Link arm ECturn *	for reveal depth 90-200 mm	135933	according to RAL
Link arm ECturn	for reveal depth 0-100 mm	135932	according to RAL

COVER ECTURN

For the ECturn swing door drive



Designation	Ident-No.	Colour
Cover ECturn	133196	EV1
Cover ECturn	134291	according to RAL

GUIDE RAIL ECTURN

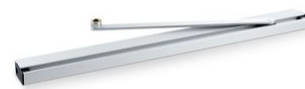
For opposite hinge side



Designation	Description	Ident-No.	Colour
Guide rail ECturn	for opposite hinge side	135971	according to RAL
Glass guide rail ECturn	for opposite hinge side	145587	according to RAL
Glass guide rail ECturn	for opposite hinge side	140115	EV1
Guide rail ECturn *	for opposite hinge side	135970	white RAL 9016
Guide rail ECturn	for opposite hinge side	135969	EV1

GUIDE RAIL ECTURN

For hinge side



Designation	Description	Ident-No.	Colour
Glass guide rail Ecturn	for hinge side	140114	EV1
Guide rail Ecturn	for hinge side	135119	according to RAL
Guide rail Ecturn	available with spindle extension from 6 to 26 mm (only suitable for installation on the hinge side)	134073	
Guide rail Ecturn *	for hinge side	135118	white RAL 9016
Guide rail Ecturn	for hinge side	135117	EV1
Glass guide rail Ecturn	for hinge side	145586	according to RAL

MOUNTING PLATE ECTURN

For installing the drive on the frame or the door leaf



Designation	Ident-No.	Colour	Dimensions
Mounting plate Ecturn	133454	according to RAL	580 x 60 x 5 mm
Mounting plate Ecturn	133452	silver-coloured	580 x 60 x 5 mm

ACCESSORIES**RECHARGEABLE BATTERY ECTURN**

Operation safeguarded in the event of a power failure



Designation	Ident-No.
Rechargeable battery Ecturn	131473

GC 338

Sensor strip with standby mode for the protection of automatic swing and revolving doors



Designation	Description	Ident-No.	Colour	Output	Operating voltage
GC 338 Pair of sensor strips 1200 mm	consisting of two complete sensor strips for protection of the swivelling range of automatic swing and revolving doors in accordance with DIN 18650 / EN 16005	142825	according to RAL	Electrical relay	24 V DC +/- 20%
GC 338 Pair of sensor strips 1500 mm	consisting of two complete sensor strips for protection of the swivelling range of automatic swing and revolving doors in accordance with DIN 18650 / EN 16005	142827	according to RAL	Potential-free relay contact	24 V DC +/- 20%
GC 338 Pair of sensor strips 1500 mm	consisting of two complete sensor strips for protection of the swivelling range of automatic swing and revolving doors in accordance with DIN 18650 / EN 16005	142757	EV1	Electrical relay	24 V DC +/- 20%
GC 338 Pair of sensor strips 1200 mm	consisting of two complete sensor strips for protection of the swivelling range of automatic swing and revolving doors in accordance with DIN 18650 / EN 16005	142219	EV1	Electrical relay	24 V DC +/- 20%

KFT ELBOW SWITCH

Plastic elbow switch, IP rating IP20, for activation of automatic doors



Designation	Description	Ident-No.	Colour	Dimensions	Type of installation
KFT elbow switch	Very flat design, IP rating IP20	114077	stainless steel colour	90 x 179 x 23 mm	Surface-mounted installation
KFT elbow switch	Very flat design, IP rating IP20	114078	white	90 x 179 x 23 mm	Surface-mounted installation

LS 990 ELBOW SWITCH

Elbow switch for activating automatic doors



Designation	Description	Ident-No.	Colour	Dimensions	Type of installation
LS 990 elbow switch	IP rating IP30 H=223mm	128583	Stainless steel	81 x 223 x 18 mm	Flush-mounted installation
LS 990 elbow switch	IP rating IP30 H=223mm	128582	Stainless steel	81 x 223 x 51 mm	Surface-mounted installation
LS 990 elbow switch	IP rating IP30 H=223mm	141041	alpine white	81 x 223 x 51 mm	Surface-mounted installation
LS 990 elbow switch	IP rating IP30 H=223mm	141042	alpine white	81 x 223 x 18 mm	Flush-mounted installation

LED SENSOR SWITCH *

Switch for activating automatic doors



Designation	Description	Ident-No.	Colour	Dimensions	Output
LED sensor switch *	Capacitive push button with blue LED lighting and haptic Braille lettering for activating automatic door systems. Protection rating IP69K	137529	black	100 x 100 x 10 mm	PNP transistor output
LED sensor switch glass *	Capacitive push button with blue LED lighting for activating automatic door systems. Protection rating IP69K	143412	white	100 x 100 x 8 mm	PNP transistor output

GC 335

Sensor strip with high safety standard for protecting automatic swing and revolving doors



Designation	Description	Ident-No.	Colour	Dimensions	Output
GC 335 Sensor strip 1400 mm	Protection of the swivelling range of automatic swing and revolving doors in accordance with DIN 18650 / EN 16005 / With one master module and end caps	128071	according to RAL	1400 x 42 x 37 mm	Potential-free relay contact
GC 335 Sensor strip 310 mm	Protection of the swivelling range of automatic swing and revolving doors in accordance with DIN 18650 / EN 16005 / With one master module and end caps	129856	EV1	310 x 42 x 37 mm	Potential-free relay contact
GC 335 Sensor strip 1400 mm	Protection of the swivelling range of automatic swing and revolving doors in accordance with DIN 18650 / EN 16005 / With one master module and end caps	128060	white RAL 9016	1400 x 42 x 37 mm	Potential-free relay contact

Designation	Description	Ident-No.	Colour	Dimensions	Output
GC 335 Sensor strip 900 mm	Protection of the swivelling range of automatic swing and revolving doors in accordance with DIN 18650 / EN 16005 / With one master module and end caps	128057	according to RAL	900 x 42 x 37 mm	Potential-free relay contact
GC 335 Sensor strip 1400 mm	Protection of the swivelling range of automatic swing and revolving doors in accordance with DIN 18650 / EN 16005 / With one master module and end caps	128058	EV1	1400 x 42 x 37 mm	Potential-free relay contact
GC 335 Sensor strip 310 mm	Protection of the swivelling range of automatic swing and revolving doors in accordance with DIN 18650 / EN 16005 / With one master module and end caps	129859	according to RAL	310 x 42 x 37 mm	Potential-free relay contact
GC 335 Sensor strip 900 mm	Protection of the swivelling range of automatic swing and revolving doors in accordance with DIN 18650 / EN 16005 / With one master module and end caps	128054	EV1	900 x 42 x 37 mm	Potential-free relay contact

WRB-5 *

Radio reception board for Ecturn, Ecturn Inside and Powerturn swing door drives



Designation	Description	Ident-No.	Dimensions	Operating voltage	Type of installation
WRB-5 radio reception board *	for Powerturn, Ecturn and Ecturn Inside	135170	44 x 27 x 10 mm	5 V DC	can be plugged in to DCU control units

WTH *

Remote control for activating GEZE automatic doors and window drives via the GEZE wireless programme



Designation	Description	Ident-No.	Dimensions	Operating voltage	Type of installation
WTH-2 remote control, 2 channel *	with wall fixing and IP rating IP54	131210	78 x 51 x 15 mm	12 V DC	Wall
WTH-4 remote control, 4 channel *	with wall fixing and IP rating IP54	131211	78 x 51 x 15 mm	12 V DC	Wall
WTH-1 remote control, 1 channel *	with wall fixing and IP rating IP54	131209	78 x 51 x 15 mm	12 V DC	Wall

DOOR TRANSMISSION CABLE

For door leaf installation



Designation	Description	Ident-No.
Door transmission cable Ecturn		135307

GC 302

Radar movement detector for the activation of automatic doors



Designation	Description	Ident-No.	Colour	Dimensions	Output
GC 302 R radar movement detector	Radar movement detector for the activation of automatic doors	124087	black	176 x 62 x 52 mm	Potential-free relay contact
GC 302 R radar movement detector	Radar movement detector for the activation of automatic doors	124088	according to RAL	176 x 62 x 52 mm	Potential-free relay contact

GC 307+ *

Non-contact proximity switch for activating automatic doors



Designation	Description	Ident-No.	Colour	Dimensions	Type of installation
GC 307+ (hand icon) *	automatic doors	195727	alpine white	80 x 80 x 21 mm	Surface-mounted installation
GC 307+ (WC icon) *	automatic doors / Suitable for Powerturn, EMD, and standard sliding doors	195751	alpine white	80 x 80 x 21 mm	Surface-mounted installation
GC 307+ (hand icon) *	automatic doors	193226	alpine white	80 x 80 x 8 mm	Flush-mounted installation
GC 307+ (WC icon) *	automatic doors / Suitable for Powerturn, EMD, and standard sliding doors	195750	alpine white	80 x 80 x 8 mm	Flush-mounted installation

GC 342

Laser scanner for the protection of automatic doors and windows with integrated object and wall blanking



Designation	Description	Ident-No.	Colour	Dimensions	Output
GC 342 (left module)	Laser scanner with one laser curtain for protection of the swivelling range of automatic swing doors / consisting of sensor module, cable and accessories	167433	white	143 x 86 x 40 mm	2 potential-free relay contacts
GC 342 (right module)	Laser scanner with one laser curtain for protection of the swivelling range of automatic swing doors / consisting of sensor module, cable and accessories	167435	black	143 x 86 x 40 mm	2 potential-free relay contacts
GC 342 (left module)	Laser scanner with one laser curtain for protection of the swivelling range of automatic swing doors / consisting of sensor module, cable and accessories	167434	stainless steel colour	143 x 86 x 40 mm	2 potential-free relay contacts
GC 342 (left module)	Laser scanner with one laser curtain for protection of the swivelling range of automatic swing doors / consisting of sensor module, cable and accessories	167432	black	143 x 86 x 40 mm	2 potential-free relay contacts
GC 342 Kit	Laser scanner with one laser curtain for protection of the swivelling range of automatic swing doors / consisting of two sensor modules, cable and accessories	167439	white	143 x 86 x 40 mm	2 potential-free relay contacts
GC 342 (right module)	Laser scanner with one laser curtain for protection of the swivelling range of automatic swing doors / consisting of sensor module, cable and accessories	167437	stainless steel colour	143 x 86 x 40 mm	2 potential-free relay contacts
GC 342 Kit	Laser scanner with one laser curtain for protection of the swivelling range of automatic swing doors / consisting of two sensor modules, cable and accessories	167438	black	143 x 86 x 40 mm	2 potential-free relay contacts
GC 342 (right module)	Laser scanner with one laser curtain for protection of the swivelling range of automatic swing doors / consisting of sensor module, cable and accessories	167436	white	143 x 86 x 40 mm	2 potential-free relay contacts
GC 342 Kit	Laser scanner with one laser curtain for protection of the swivelling range of automatic swing doors / consisting of two sensor modules, cable and accessories	167440	stainless steel colour	143 x 86 x 40 mm	2 potential-free relay contacts

GC 342+ *

Laser scanner for the protection of automatic swing doors with integrated object and wall blanking



Designation	Description	Ident-No.	Colour	Dimensions	Output
GC 342+ (left module) *	Laser scanner with four laser curtains for optimal protection of the hazardous areas - including the secondary closing edge - of automatic swing doors; additional output for non-contact activation / consisting of sensor module, cable and accessories	198693	stainless steel colour	145 x 88 x 68 mm	3 potential-free relay contacts
GC 342+ (left module) *	Laser scanner with four laser curtains for optimal protection of the hazardous areas - including the secondary closing edge - of automatic swing doors; additional output for non-contact activation / consisting of sensor module, cable and accessories	198669	black	145 x 88 x 68 mm	3 potential-free relay contacts
GC 342+ (left module) *	Laser scanner with four laser curtains for optimal protection of the hazardous areas - including the secondary closing edge - of automatic swing doors; additional output for non-contact activation / consisting of sensor module, cable and accessories	198671	white	145 x 88 x 68 mm	3 potential-free relay contacts
GC 342+ (right module) *	Laser scanner with four laser curtains for optimal protection of the hazardous areas - including the secondary closing edge - of automatic swing doors; additional output for non-contact activation / consisting of sensor module, cable and accessories	198694	stainless steel colour	145 x 88 x 68 mm	3 potential-free relay contacts
GC 342+ (right module) *	Laser scanner with four laser curtains for optimal protection of the hazardous areas - including the secondary closing edge - of automatic swing doors; additional output for non-contact activation / consisting of sensor module, cable and accessories	198670	black	145 x 88 x 68 mm	3 potential-free relay contacts
GC 342+ (right module) *	Laser scanner with four laser curtains for optimal protection of the hazardous areas - including the secondary closing edge - of automatic swing doors; additional output for non-contact activation / consisting of sensor module, cable and accessories	198692	white	145 x 88 x 68 mm	3 potential-free relay contacts

LED SENSOR FOOT SWITCH *

Switch for activating automatic doors



Designation	Description	Ident-No.	Colour	Dimensions	Output
LED sensor foot switch *	Capacitive push button for activating automatic door systems. Protection rating IP69K	182936	Stainless steel	100 x 100 x 3 x 14 mm	PNP transistor output

AS 500 *

AS emergency stop switch with glass pane and five interchangeable labels ("Nottaster öffnen", "Notschalter", "Emergency switch", "Tür schließen" and without text)



Designation	Description	Ident-No.	Colour	Dimensions	Type of installation
AS 500 emergency stop switch	Rocker control switch with glow lamp, glass pane and five exchangeable labels ("open emergency push button", "emergency stop switch", "emergency switch", "close door" and no label)	120881	alpine white/red	80 x 80 x 21 mm	Flush-mounted installation

AIR 20

Active infrared light switch for monitoring the door handle of automatic swing doors



Designation	Description	Ident-No.	Colour	Dimensions	Operating voltage
AIR 20-Var	Light switch for monitoring the door handle of automatic swing doors	082689	black	72 x 66 x 49 mm	24 V

EFT ELBOW SWITCH *

Stainless steel elbow switch with IP65 IP rating for activating automatic doors



Designation	Description	Ident-No.	Colour	Dimensions	Type of installation
EFT elbow switch	Very flat design / IP rating IP65	119898	Stainless steel	75 x 250 x 17 mm	Surface-mounted installation

MINI LED SENSOR SWITCH *

Activation of all GEZE automatic doors



Designation	Description	Ident-No.	Colour	Dimensions	Output
LED sensor switch 20 mm *	Capacitive push button for activating automatic door systems. Protection rating IP69K	143273	Aluminium, matt	28.5 x 28.5 x 21 mm	PNP transistor output

TPS

Keypad programme switch for setting the mode of operation for automatic doors



Designation	Description	Ident-No.	Colour	Dimensions	Operating voltage
TPS keypad programme switch	with 2 control keys, LED display, coded fault display, IP rating IP40 / suitable for switch programmes with 55x55mm switch insert	113231	alpine white	80 x 80 x 11 mm	24 V DC
TPS keypad programme switch and SCT key switch	in combined double frame without Euro profile half cylinder	113232	alpine white	80 x 152 x 11 mm	24 V DC

AS 500 ROCKER PUSH BUTTON

Activation of all GEZE automatic doors



Designation	Ident-No.	Colour	Dimensions	Type of installation
AS 500 rocker push button	120888	alpine white	80 x 80 x 9 mm	Flush-mounted installation

PULL SWITCH *

For triggering calls in barrier-free bathrooms or WCs



Designation	Description	Ident-No.	Colour	Dimensions	Type of installation
Pull switch	Incl. pull chain 500 mm long	008607	red	36 x 94 x 34 mm	Surface-mounted installation

GC 308 *

Radar movement detector with individual adjustment option for activating automatic doors



Designation	Description	Ident-No.	Colour	Dimensions	Output
GC 308 R radar movement detector *	Activation of automatic drives	203605	stainless steel colour	120 x 50 x 50 mm	Potential-free relay contact
GC 308 R radar movement detector *	Activation of automatic drives	203603	black	120 x 50 x 50 mm	Potential-free relay contact
GC 308 R radar movement detector *	Activation of automatic drives	203604	white	120 x 50 x 50 mm	Potential-free relay contact

DIGITAL PROGRAMMABLE TIMER *

For time-controlled changes of modes of operation on automatic doors



REED SWITCH *

For non-contact monitoring of the door leaf position



Designation	Description	Ident-No.	Colour
Reed switch *	For non-contact monitoring of the door leaf position	092777	white

E2 ROCKER PUSH BUTTON

Activation of all GEZE automatic doors



Designation	Ident-No.	Colour	Dimensions	Type of installation
E2 rocker push button	094013	pure white matt	80.8 x 80.8 x 9.3 mm	Flush-mounted installation

LS 990 ROCKER PUSH BUTTON

Activation of all GEZE automatic doors



Designation	Ident-No.	Colour	Dimensions	Type of installation
LS 990 rocker push button	098396	Stainless steel	81 x 81 x 11 mm	Flush-mounted installation

* The products designated above may vary in form, type, characteristics, function, or availability depending on the country. Please get in touch with your GEZE contact person if you have any questions.