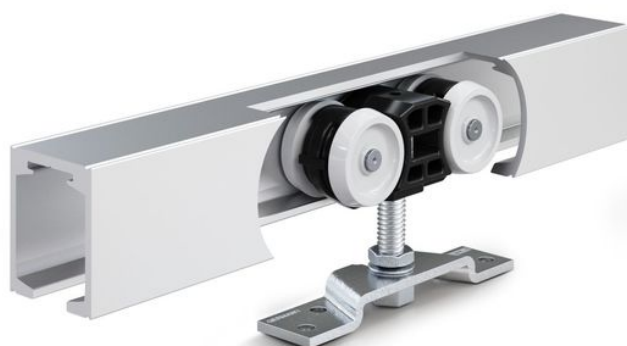


Product data sheet

Perlan 140 wood ceiling installation



Sliding door fitting system for timber, plastic, or metal doors
with a leaf weight of 140 kg

AREAS OF APPLICATION

- Frequently used interior sliding doors
- Living, office, and conference areas as well as hotels
- Installation of fittings in all visible areas
- Single and multiple-leaf sliding doors
- Installation to the ceiling

Perlan 140 wood ceiling installation

PRODUCT FEATURES

- Sliding door fitting for leaf weights of up to 140 kg
- For leaves made of wood, plastic, or metal
- With damping on one or both sides for doors with up to 80 kg leaf weight, so that the door is quietly slowed down and moved into the end position
- Adjustable height compensation levels out unevenness between the ceiling and the track
- Precision ball bearings in the roller carriages offer very smooth sliding action
- Tested for durability in accordance with DIN EN 1527 over 100,000 test cycles
- Retractable suspension plates allow for the door to be installed with a small clearance between the track and the upper edge of the door

TECHNICAL DATA

Productname

Perlan 140 wood ceiling installation

PART

PERLAN 140 SET FOR TIMBER LEAVES

Sliding door fitting for ceiling installation and timber leaf



Designation	Description	Ident-No.	Colour	Leaf width (min.)	Leaf width (max.)
Perlan 140 set for timber leaves	For ceiling installation with standard suspension plate and Perlan SoftStop, up to 80 kg leaf weight. Perlan SoftStop one-sided, for track 2450 mm two-sided.	134888	EV1	860 mm	1240 mm
Perlan 140 set for timber leaves	For ceiling installation with standard suspension plate and Perlan SoftStop, up to 80 kg leaf weight. Perlan SoftStop one-sided, for track 2450 mm two-sided.	134887	EV1	535 mm	1000 mm

Perlan 140 wood ceiling installation



ACCESSORIES

CONCEALED SUSPENSION PROFILE SET

For milling into the wooden leaf



Designation	Description	Ident-No.
Concealed suspension profile set	2 pieces, for milling into the timber leaf, including suspension bolts and flat open-ended spanner for vertical adjustment	138015

END STOP WITH ADJUSTABLE HOLD-OPEN SPRING

Adjustable end stop for Perlan sliding door fitting



Designation	Ident-No.
End stop with adjustable hold-open spring	069274

HOLD-OPEN SPRING

Hold-open spring for Perlan 140 end stop



Designation	Ident-No.
Hold-open spring	064242

Perlan 140 wood ceiling installation



DOOR STOP

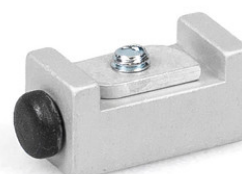
End stop for sliding leaves



Designation	Ident-No.
Door stop	000339
Door stop	000342

BUFFER FOR CONTINUOUS FLOOR GUIDE *

Buffer for continuous floor guides integrated in the floor



Designation	Ident-No.	Colour
Buffer for continuous floor guide	124655	EV1

HEIGHT COMPENSATION MECHANISM / CEILING DISTANCE SET, WITH VARIABLE ADJUSTMENT

Height compensation with variable adjustment for ceiling installation of tracks



Designation	Description	Ident-No.
Height compensation mechanism / ceiling distance set, with variable adjustment	6 pieces, height compensation mechanism with variable adjustment from 13 mm to 18 mm. For use for ceiling mounting using clip-on cover 100/145 as well as for general use on uneven ceilings	138099

Perlan 140 wood ceiling installation



ALL-GLASS SYSTEM STAINLESS STEEL SINGLE POINT FIXING SET

Stainless steel single point fixing for toughened safety glass panes



Designation	Description	Ident-No.	Colour	Glass thickness
All-glass system stainless steel single point fixing set	2 pieces, brushed, for wooden leaves and glass leaves 8-12 mm, including 4 Rampa sleeves (wood) and installation material for glass	127961	Stainless steel	8 - 12 mm

PERLAN SOFTSTOP SET, MEDIUM VERSION, DAMPED ON ONE SIDE, UP TO 80 KG

Perlan SoftStop damping on one side for leaf weights up to 80 kg and leaf widths of 900 up to 1290 mm



Designation	Description	Ident-No.	Leaf width (min.)	Leaf width (max.)
Perlan SoftStop set, medium, one side	The set includes: 2 x roller carriage with damping unit on one side, 2 x end stop, 1 x trigger with fixing screw, 2 x standard suspension plate	128877	900 mm	1290 mm

PERLAN SOFTSTOP SET, LONG VERSION, DAMPED ON BOTH SIDES, UP TO 80 KG

Perlan SoftStop damping on both sides for leaf weights up to 80 kg



Designation	Description	Ident-No.	Leaf width (min.)	Leaf width (max.)
Perlan SoftStop set, long, both sides	The set includes: 2 x roller carriage with damping unit on both sides, 2 x end stop, 2 x trigger with fixing screws, 2 x standard suspension plate	128891	1290 mm	1700 mm

Perlan 140 wood ceiling installation

SET PERLAN SOFTSTOPDUO, DAMPED ON BOTH SIDES

Perlan SoftStopDuo with damping on both sides up to 80 kg leaf weight



Designation	Description	Ident-No.	Leaf width (min.)	Leaf width (max.)
Perlan SoftStopDuo set, damped on both sides, up to 80 kg	The set includes: 2 x roller carriage with damping unit on both sides, 2 x end stop, 2 x trigger with fixing screws, 2 x standard suspension plate	150071	750 mm	1290 mm

DOOR PULL HANDLE, CONFIGURED *

Push bar – round design for installation on glass leaves



Designation	Ident-No.	Colour
Door pull handle, configured *	127616	Stainless steel

PERLAN SOFTSTOP SET, SHORT VERSION, DAMPED ON ONE SIDE, UP TO 80 KG

Perlan SoftStop damping on one side for leaf weights up to 80 kg and leaf widths of 575 to 900 mm



Designation	Description	Ident-No.	Leaf width (min.)	Leaf width (max.)
Perlan SoftStop set, short, one side	The set includes: 2 x roller carriage with damping unit on one side, 2 x end stop, 1 x trigger with fixing screw, 2 x standard suspension plate	128876	575 mm	900 mm

Perlan 140 wood ceiling installation



* The products designated above may vary in form, type, characteristics, function, or availability depending on the country. Please get in touch with your GEZE contact person if you have any questions.