

Product data sheet

TS 5000 ISM ECline



Overhead door closer system with guide rail for barrier-free, easy-to-open double leaf doors up to 1250 mm leaf width in accordance with DIN 18040 with integrated closing sequence control

AREAS OF APPLICATION

- Fire and smoke protection doors
- Right and left double leaf single-action doors
- Symmetrical and asymmetrical division of door possible
- Single-action doors up to 2500 mm hinge clearance and 1250 mm leaf width
- Minimum hinge clearance 1300 mm, minimum width of passive leaf 400 mm
- Door leaf installation hinge side
- Access for all in accordance with DIN 18040 up to EN5

PRODUCT FEATURES

- System with two door closers TS 5000 Ecline and an ISM guide rail
- Barrier-free in accordance with DIN 18040 up to EN5 (1250 mm leaf width)
- Closing force of EN3-5 with variable adjustment
- Can be used for right and left hand doors without conversion
- Closing sequence control holds the active leaf in the waiting position until the passive leaf is closed
- Hydraulic latching action which accelerates the door shortly before it is closed
- Closing speed can be individually adjusted
- Integrated back check, slows down doors that are thrown open forcefully
- Visual closing force display for easy control of the setting
- All functions can be adjusted from the front and less installation time compared to standard systems

TECHNICAL DATA

Productname	TS 5000 ISM Ecline
Barrier-free in accordance with DIN 18040 up to leaf width (max.) in mm	1250 mm
Leaf width (max.)	1250 mm
Type of installation	Door leaf installation hinge side
Opening angle (max.)	180 °
Minimum hinge clearance	1300 mm
Minimum passive leaf width	400 mm
Suitability for fire protection doors	Yes
Closing force adjustable	Yes, stepless
Adjustable closing speed	Yes
Latching action adjustable	Yes, via valve
Back check integrated	Yes, hydraulically adjustable

Position of closing force adjustment	Front
Visual closing force display	Yes
Hold-open function	Optional
Smoke switch integrated	No
Closing sequence control integrated	Yes

PART

ISM GUIDE RAIL TS 5000

With closing sequence control and levers



Designation	Description	Ident-No.	Colour	Dimensions
ISM guide rail TS 5000	continuous, with integrated closing sequence control and levers	115592	Stainless steel optic	2630 x 40 x 30 mm
ISM guide rail TS 5000	continuous, with integrated closing sequence control and levers	115549	silver-coloured	2630 x 40 x 30 mm
ISM guide rail TS 5000	continuous, with integrated closing sequence control and levers	115591	white RAL 9016	2630 x 40 x 30 mm
ISM guide rail TS 5000	continuous, with integrated closing sequence control and levers	115593	according to RAL	2630 x 40 x 30 mm

CLOSER BODY TS 5000 ECLINE

Main body for overhead door closer with guide rail EN 3-5 with back check



Designation	Description	Ident-No.	Colour	Closing force in accordance with EN 1154	Dimensions
TS 5000 Ecline door closer	Closing force EN 3-5, with back check (without guide rail and lever)	143640	silver-coloured	EN 3 - 5	287 x 47 x 60 mm
TS 5000 Ecline door closer	Closing force EN 3-5, with back check (without guide rail and lever)	143642	Stainless steel face plate	EN 3 - 5	287 x 47 x 60 mm
TS 5000 Ecline door closer	Closing force EN 3-5, with back check (without guide rail and lever)	143641	white RAL 9016	EN 3 - 5	287 x 47 x 60 mm
TS 5000 Ecline door closer	Closing force EN 3-5, with back check (without guide rail and lever)	143643	according to RAL	EN 3 - 5	287 x 47 x 60 mm

ACCESSORIES**CB FLEX**

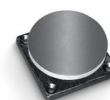
Carry bar for safe closing of double leaf fire protection doors



Designation	Description	Ident-No.	Colour
GEZE CB flex *	for use on all 2-leaf rebated doors. Concealed length adjustment with variable adjustment up to 210 mm leaf protrusion, hinged mechanism not visible, profile can be shortened if necessary, with attachment material	182652	white RAL 9016
GEZE CB flex	for use on all 2-leaf rebated doors. Concealed length adjustment with variable adjustment up to 210 mm leaf protrusion, hinged mechanism not visible, profile can be shortened if necessary, with attachment material	153602	silver-coloured
GEZE CB flex	for use on all 2-leaf rebated doors. Concealed length adjustment with variable adjustment up to 210 mm leaf protrusion, hinged mechanism not visible, profile can be shortened if necessary, with attachment material	153728	according to RAL

MAGNETIC COUNTERPLATE BASIC MODEL *

Standard version, rubber support



Designation	Description	Ident-No.	Dimensions
GEZE magnetic counter plate *	Standard version, rubber support	115954	55 x 55 x 18 mm

MAGNETIC COUNTERPLATE SPRING BUFFER *

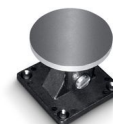
Version with spring buffer



Designation	Description	Ident-No.	Dimensions
GEZE magnetic counter plate *	Version with spring buffer	115955	55 x 55 x 79 mm

MAGNETIC COUNTERPLATE JOINT *

Version with adjustable joint



Designation	Description	Ident-No.	Dimensions
GEZE magnetic counter plate *	Version with adjustable joint	115956	55 x 55 x 50 mm

HOLD-OPEN MAGNET BASIC MODEL *

With screw attachment on the rear and without mounting plate



Designation	Description	Ident-No.	Dimensions	Type of installation
GEZE door hold-open magnet *	Basic model, without mounting plate, screw fixture on the back	115830	50 x 50 x 30 mm	Surface-mounted, Integrated

HOLD-OPEN MAGNET FLEXIBLE 185 MM *

For wall or ceiling installation with stand pipe 185 mm



Designation	Description	Ident-No.	Dimensions	Type of installation
GEZE door hold-open magnet *	Wall/ceiling mounting, standpipe 185 m, flexible up to 110 mm, easy to shorten, magnetic head bendable through 90°	115952	90 x 80 x 185 mm	Wall, Ceiling, Floor

HOLD-OPEN MAGNET FLEXIBLE 335 MM *

For wall or ceiling installation with stand pipe 335 mm



Designation	Description	Ident-No.	Dimensions	Type of installation
GEZE door hold-open magnet *	Wall/ceiling mounting, standpipe 335 mm, flexible up to 110mm, easy to shorten, magnetic head bendable through 90°	115953	90 x 80 x 335 mm	Wall, Ceiling, Floor

HOLD-OPEN MAGNET WALL INSTALLATION

For wall installation with base plate



Designation	Description	Ident-No.	Dimensions	Type of installation
GEZE door hold-open magnet	Wall mounting, with base plate	115829	93 x 65 x 33 mm	Surface-mounted installation

HOLD-OPEN MAGNET WALL INSTALLATION 65 MM *

For wall installation with base 65 mm



Designation	Description	Ident-No.	Dimensions	Type of installation
GEZE door hold-open magnet *	Wall mounting with base 65 mm	155573	70 x 70 x 65 mm	Wall

HOLD-OPEN MAGNET WALL INSTALLATION SURFACE-MOUNTED *

For wall installation surface mounting or floor mounting with accessories and base



Designation	Description	Ident-No.	Dimensions	Type of installation
GEZE door hold-open magnet *	Wall mounting surface mounting or floor mounting with base accessories (not included in scope of delivery)	155569	110 x 85 x 40 mm	Surface-mounted installation, Floor

HOLD-OPEN MAGNET WALL INSTALLATION FLUSH-MOUNTED *

For wall installation flush-mounted



Designation	Description	Ident-No.	Dimensions	Type of installation
GEZE door hold-open magnet *	Flush-mounted wall mounting	155567	85 x 85 x 30 mm	Flush-mounted installation

KIT ECLINE ISM / ISM BG *

Power storage for use on the active leaf in double leaf ISM and ISM BG guide rails



Designation	Description	Ident-No.	Colour
Kit Ecline ISM / ISM BG *	Power storage for use on the active leaf in double leaf ISM and ISM BG guide rails	154767	black

GC 152 *

Smoke detector for GEZE hold-open systems



Designation	Description	Ident-No.	Colour	Supply voltage	Type of installation
GEZE smoke detector GC 152 *	Complete with base, 24 V DC, 20 mA, tested in accordance with EN54-7, with general approval for use with all GEZE hold-open systems FA GC 150, integrated line monitoring, conform with DIN EN 14637	139850	white RAL 9010	24 V DC	Ceiling

GC 153 *

Thermal detector for GEZE hold-open systems



Designation	Description	Ident-No.	Colour	Supply voltage	Type of installation
GEZE thermal detector GC 153 *	Complete with base, 24 V DC, 20 mA, tested in accordance with EN54-5, with general approval for use with all GEZE hold-open systems FA GC 150, integrated line monitoring, conform with DIN EN 14637	139881	white	24 V DC	Ceiling

AS 500

Manual trigger switch for the manual release of electrically controlled hold-open devices



Designation	Description	Ident-No.	Colour	Dimensions	Operating voltage
AS 500 manual trigger switch	for the manual release of electrically controlled hold-open devices including terminating resistor for line monitoring	116266	alpine white/red	80 x 80 x 9 mm	24 V DC
AS 500 manual trigger switch, glass	for the manual release of electrically controlled hold-open devices including terminating resistor for line monitoring, glass pane and 5 interchangeable labels	120880	alpine white/red	80 x 80 x 21 mm	24 V DC

MECHANICAL HOLD-OPEN UNIT

For ISM guide rail



Designation	Description	Ident-No.
Mechanical hold-open unit	for ISM-guide rail / ISM-guide rail BG, retention force adjustable, can be overridden	118437

COVER CAP DOOR CLOSER *

For TS 5000 (L)/TS 4000, can only be used for door leaf installation



Designation	Description	Ident-No.	Colour	Dimensions
Cover cap door closer *	for TS 5000 / TS 5000 L / TS 4000, can only be used for door leaf installation	067726	white RAL 9016	298 x 55 x 67.2 mm
Cover cap door closer *	for TS 5000 / TS 5000 L / TS 4000, can only be used for door leaf installation	072696	Stainless steel	298 x 55 x 67.2 mm
Cover cap door closer *	for TS 5000 / TS 5000 L / TS 4000, can only be used for door leaf installation	067724	silver-coloured	298 x 55 x 67.2 mm
Cover cap door closer *	for TS 5000 / TS 5000 L / TS 4000, can only be used for door leaf installation	000756	according to RAL	298 x 55 x 67.2 mm
Cover cap door closer *	for TS 5000 / TS 5000 L / TS 4000, can only be used for door leaf installation	067725	dark bronze	298 x 55 x 67.2 mm

RSZ 7 *

Extendable smoke switch control unit for all GEZE hold-open devices

GEZE

Designation	Description	Ident-No.	Colour	Supply voltage
RSZ 7 smoke switch control unit *	Smoke switch control unit for all GEZE hold-open devices	185231	according to RAL	230 V
RSZ 7 smoke switch control unit *	Smoke switch control unit for all GEZE hold-open devices	184196	Stainless steel optic	230 V
RSZ 7 smoke switch control unit *	Smoke switch control unit for all GEZE hold-open devices	181025	silver-coloured	230 V
RSZ 7 smoke switch control unit *	Smoke switch control unit for all GEZE hold-open devices	184195	white RAL 9016	230 V

FLEXIBLE OPENING RESTRICTOR

For E and R guide rails, single and double leaf



Designation	Description	Ident-No.
Flexible opening restrictor	for guide rail 1-leaf: TS 5000 E/R/RFS (door leaf installation), Boxer E; 2-leaf: all E/R/ISM variants TS 5000 (incl. VPK) and Boxer	145311

COVER CAP DOOR CLOSER *

For TS 4000/5000, curved shape

Designation	Description	Ident-No.	Colour	Dimensions
Cover cap door closer *	for TS 5000/TS 4000, semi-radial, can only be used for door leaf installation	092943	Polished stainless steel	337 x 51 x 72 mm
Cover cap door closer *	for TS 5000/TS 4000, semi-radial, can only be used for door leaf installation	092944	Satin stainless steel	337 x 51 x 72 mm

COVER CAP DOOR CLOSER *

For TS 4000/5000, rectangular shape

Designation	Description	Ident-No.	Colour	Dimensions
Cover cap door closer *	for TS 5000 / TS 4000, square, can only be used for door leaf installation	092938	Polished stainless steel	298 x 51 x 72 mm
Cover cap door closer *	for TS 5000 / TS 4000, square, can only be used for door leaf installation	092939	Satin stainless steel	298 x 51 x 72 mm

INSTALLATION MATERIAL

MOUNTING PLATE GUIDE RAIL

For ISM and E-ISM guide rail



Designation	Description	Ident-No.	Colour
Mounting plate guide rail	for ISM / E-ISM guide rail	118702	silver-coloured
Mounting plate guide rail	for ISM / E-ISM guide rail	118703	according to RAL

MOUNTING PLATE DOOR CLOSER

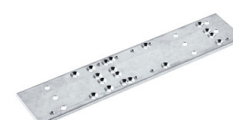
For TS 5000 and TS 4000 with hole pattern in accordance with DIN EN 1154 Supplement 2



Designation	Description	Ident-No.	Colour
Mounting plate door closer	for TS 5000/TS 4000 with hole pattern according to DIN EN 1154 Supplement 1	068627	white RAL 9016
Mounting plate door closer	for TS 5000/TS 4000 with hole pattern according to DIN EN 1154 Supplement 1	057956	Galvanised
Mounting plate door closer	for TS 5000/TS 4000 with hole pattern according to DIN EN 1154 Supplement 1	029176	according to RAL
Mounting plate door closer	for TS 5000/TS 4000 with hole pattern according to DIN EN 1154 Supplement 1	049185	silver-coloured
Mounting plate door closer	for TS 5000/TS 4000 with hole pattern according to DIN EN 1154 Supplement 1	137725	Stainless steel optic
Mounting plate door closer	for TS 5000/TS 4000 with hole pattern according to DIN EN 1154 Supplement 1	052351	dark bronze

MOUNTING PLATE DOOR CLOSER *

For TS 5000 and TS 4000 with hole pattern in accordance with DIN EN 1154 Supplement 2



TS 5000 ISM ECline



Designation	Description	Ident-No.
Mounting plate *	for TS 5000/TS 4000 with hole pattern according to DIN EN 1154 Supplement 1	083992

* The products designated above may vary in form, type, characteristics, function, or availability depending on the country. Please get in touch with your GEZE contact person if you have any questions.