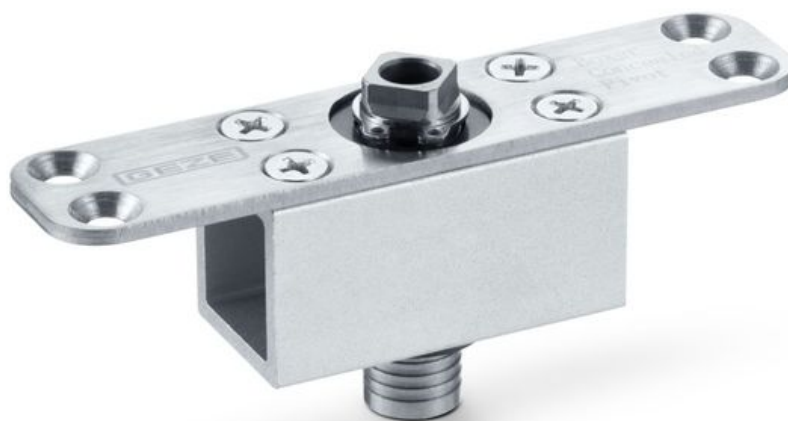


# Product data sheet

# Boxer pivot bearing



For opening restriction or hold-open of doors without door closer

## AREAS OF APPLICATION

- Doors without smoke and fire protection requirements for indoor use
- Hold-open of non-fire protection doors
- Restriction of the opening angle
- Can be used in combination with double leaf systems with automatic active leaf and manual passive leaf

# Boxer pivot bearing



## PRODUCT FEATURES

→ Spindle extension adjustable stepwise up to 8 mm

## TECHNICAL DATA

Productname Boxer pivot bearing

## VARIANTS / ORDER INFO

Designation	Description	Ident-No.	Spindle extension
Boxer pivot bearing	Integrated pivot bearing for opening restriction or hold-open function for doors without door closer, for use with all Boxer guide rails	156278	0 mm, 2 mm, 4 mm, 6 mm, 8 mm