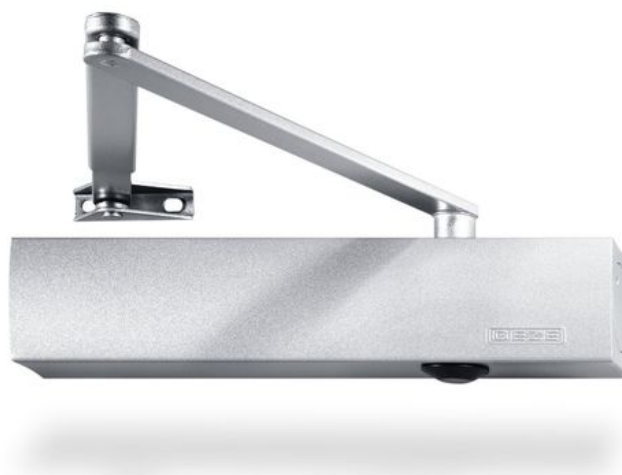


# Product data sheet

## TS 4000 S



Overhead door closer with link arm for single leaf doors of up to 1400 mm leaf width with delayed closing

### AREAS OF APPLICATION

- Fire and smoke protection doors
- Right and left single-action doors
- Single-action doors up to 1400 mm leaf width
- Door leaf installation hinge side and transom installation opposite hinge side
- Door leaf installation opposite hinge side in parallel arm installation possible



### PRODUCT FEATURES

- Closing force with variable adjustment from EN2-6
- Can be used for right and left hand doors without conversion
- Delayed closing adjustable to adapt the closing force of the door up to approx 80° opening angle
- Hydraulic latching action which accelerates the door shortly before it is closed
- Closing speed can be individually adjusted
- Integrated back check, slows down doors that are thrown open forcefully
- Visual closing force display for easy control of the setting
- All functions can be adjusted from the front

### TECHNICAL DATA

Productname	TS 4000 S
Closing force in accordance with EN 1154	EN 2 - 6
Barrier-free in accordance with DIN 18040 up to leaf width (max.) in mm	1100 mm
Leaf width (max.)	1400 mm
Type of installation	Door leaf installation hinge side, Door leaf installation opposite hinge side, Transom installation opposite hinge side
Opening angle (max.)	180 °
Suitability for fire protection doors	Yes
Closing force adjustable	Yes, stepless
Adjustable closing speed	Yes
Latching action adjustable	Yes, via valve
Back check integrated	Yes, hydraulically adjustable
Delayed closing integrated	Yes
Position of closing force adjustment	Front
Visual closing force display	Yes
Hold-open function	Optional
Smoke switch integrated	No

# TS 4000 S



## PART

### LINK ARM TS 4000 / 2000

Standard link arm



Designation	Description	Ident-No.	Colour
Link arm TS 4000/2000	Standard	102425	according to RAL
Link arm TS 4000/2000	Standard	102421	silver-coloured
Link arm TS 4000/2000	Standard	102423	white RAL 9016
Link arm TS 4000/2000	Standard	102426	Stainless steel optic

### LINK ARM TS 4000 / 2000 ELONGATED

For transom installation with reveal depth between 70-170 mm



Designation	Description	Ident-No.	Colour
Link arm TS 4000/2000 elongated	Extended, for transom installation with reveal depth between 70-170 mm	102434	according to RAL
Link arm TS 4000/2000 elongated	Extended, for transom installation with reveal depth between 70-170 mm	102431	silver-coloured
Link arm TS 4000/2000 elongated	Extended, for transom installation with reveal depth between 70-170 mm	102433	white RAL 9016

### CLOSER BODY TS 4000 S

For overhead door closers with link arm EN 2-6 with delayed closing



Designation	Description	Ident-No.	Colour	Closing force in accordance with EN 1154	Dimensions
GEZE TS 4000 S Closer	Size EN 2-6 with delayed closing action and back check (without link arm)	119562	black RAL 9005	EN 2 - 6	287 x 46 x 60 mm
GEZE TS 4000 S Closer	Size EN 2-6 with delayed closing action and back check (without link arm)	107747	white RAL 9016	EN 2 - 6	287 x 46 x 60 mm
GEZE TS 4000 S Closer	Size EN 2-6 with delayed closing action and back check (without link arm)	107746	dark bronze	EN 2 - 6	287 x 46 x 60 mm
GEZE TS 4000 S Closer	Size EN 2-6 with delayed closing action and back check (without link arm)	107745	silver-coloured	EN 2 - 6	287 x 46 x 60 mm

# TS 4000 S



Designation	Description	Ident-No.	Colour	Closing force in accordance with EN 1154	Dimensions
GEZE TS 4000 S Closer	Size EN 2-6 with delayed closing action and back check (without link arm)	107748	according to RAL	EN 2 - 6	287 x 46 x 60 mm

## ACCESSORIES

### LINK ARM TS 4000 / 2000

With mechanical hold-open device



Designation	Description	Ident-No.	Colour	Hold-open point min.	Hold-open point max.
Link arm TS 4000/2000 / F	With mechanical hold-open device	102454	silver-coloured	70 °	150 °
Link arm TS 4000/2000 / F	With mechanical hold-open device	102456	white RAL 9016	70 °	150 °
Link arm TS 4000/2000 / F	With mechanical hold-open device	102457	according to RAL	70 °	150 °

### LINK ARM TS 4000 / 2000

with mechanical hold-open device which can be switched on and off



Designation	Description	Ident-No.	Colour	Hold-open point min.	Hold-open point max.
Link arm TS 4000/2000 / F	with mechanical hold-open device which can be switched on and off	102445	silver-coloured	70 °	150 °
Link arm TS 4000/2000 / F	with mechanical hold-open device which can be switched on and off	102448	according to RAL	70 °	150 °
Link arm TS 4000/2000 / F	with mechanical hold-open device which can be switched on and off	102447	white RAL 9016	70 °	150 °

**COVER CAP DOOR CLOSER \***

For TS 5000 (L)/TS 4000, can only be used for door leaf installation



Designation	Description	Ident-No.	Colour	Dimensions
Cover cap door closer *	for TS 5000 / TS 5000 L / TS 4000, can only be used for door leaf installation	067726	white RAL 9016	298 x 55 x 67.2 mm
Cover cap door closer *	for TS 5000 / TS 5000 L / TS 4000, can only be used for door leaf installation	072696	Stainless steel	298 x 55 x 67.2 mm
Cover cap door closer *	for TS 5000 / TS 5000 L / TS 4000, can only be used for door leaf installation	067724	silver-coloured	298 x 55 x 67.2 mm
Cover cap door closer *	for TS 5000 / TS 5000 L / TS 4000, can only be used for door leaf installation	000756	according to RAL	298 x 55 x 67.2 mm
Cover cap door closer *	for TS 5000 / TS 5000 L / TS 4000, can only be used for door leaf installation	067725	dark bronze	298 x 55 x 67.2 mm

**COVER CAP DOOR CLOSER \***

For TS 4000/5000, curved shape

Designation	Description	Ident-No.	Colour	Dimensions
Cover cap door closer *	for TS 5000/TS 4000, semi-radial, can only be used for door leaf installation	092943	Polished stainless steel	337 x 51 x 72 mm
Cover cap door closer *	for TS 5000/TS 4000, semi-radial, can only be used for door leaf installation	092944	Satin stainless steel	337 x 51 x 72 mm

**COVER CAP DOOR CLOSER \***

For TS 4000/5000, rectangular shape

Designation	Description	Ident-No.	Colour	Dimensions
Cover cap door closer *	for TS 5000 / TS 4000, square, can only be used for door leaf installation	092938	Polished stainless steel	298 x 51 x 72 mm
Cover cap door closer *	for TS 5000 / TS 4000, square, can only be used for door leaf installation	092939	Satin stainless steel	298 x 51 x 72 mm

**INSTALLATION MATERIAL****SPINDLE EXTENSION**

For TS 4000/TS 2001



Designation	Description	Ident-No.	Colour	Spindle extension
Spindle extension for TS 4000 / TS 2000	Crown gearing	103678	black	15 mm
Spindle extension for TS 4000 / TS 2000	Crown gearing	103550	Galvanised	20 mm
Spindle extension for TS 4000 / TS 2000	Crown gearing	103679	black	20 mm
Spindle extension for TS 4000 / TS 2000	Crown gearing	139793	according to RAL	15 mm
Spindle extension for TS 4000 / TS 2000	Crown gearing	103548	Galvanised	10 mm
Spindle extension for TS 4000 / TS 2000	Crown gearing	103677	black	10 mm
Spindle extension for TS 4000 / TS 2000	Crown gearing	103549	Galvanised	15 mm

**MOUNTING PLATE SEGMENTAL ARCHED DOOR**

for TS 4000, arch height max. 130 mm



Designation	Description	Ident-No.	Colour
Mounting plate segmental arched door	for TS 4000, arch height max. 130 mm	058782	silver-coloured
Mounting plate segmental arched door	for TS 4000, arch height max. 130 mm	119472	according to RAL
Mounting plate segmental arched door	for TS 4000, arch height max. 130 mm	058783	dark bronze

**DRILLING TEMPLATE DOOR CLOSER**

for TS 5000/TS 4000/TS 3000/TS 2000



Designation	Description	Ident-No.
Drilling template door closer	for TS 5000/TS 4000/TS 3000/TS 2000	053134

# TS 4000 S



## GLASS CLAMPING SHOE

for TS 5000/TS 4000



Designation	Description	Ident-No.	Colour	Glass thickness
Glass clamping shoe	for TS 5000/TS 4000	009494	according to RAL	10 mm
Glass clamping shoe	for TS 5000/TS 4000	057126	silver-coloured	10 mm
Glass clamping shoe	for TS 5000/TS 4000	057127	dark bronze	10 mm
Glass clamping shoe	for TS 5000/TS 4000	009491	white RAL 9016	10 mm

## MOUNTING PLATE AND COUNTERPLATE ALL-GLASS DOOR

for TS 5000/TS 4000



Designation	Description	Ident-No.	Colour	Glass thickness
Mounting plates, set, all-glass door	for TS 5000/TS 4000	007923	silver-coloured	10 mm
Mounting plates, set, all-glass door	for TS 5000/TS 4000	007926	according to RAL	10 mm
Mounting plates, set, all-glass door	for TS 5000/TS 4000	007924	dark bronze	10 mm

## MOUNTING PLATE LINK ARM \*

for TS 4000/TS 2000, with slim frames



Designation	Description	Ident-No.	Colour
Mounting plate link arm	for TS 4000/TS 2000, with slim frames	082506	according to RAL
Mounting plate link arm	for TS 4000/TS 2000, with slim frames	057109	silver-coloured

**MOUNTING PLATE DOOR CLOSER**

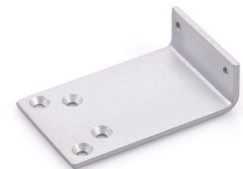
For TS 5000 and TS 4000 with hole pattern in accordance with DIN EN 1154 Supplement 2



Designation	Description	Ident-No.	Colour
Mounting plate door closer	for TS 5000/TS 4000 with hole pattern according to DIN EN 1154 Supplement 1	068627	white RAL 9016
Mounting plate door closer	for TS 5000/TS 4000 with hole pattern according to DIN EN 1154 Supplement 1	057956	Galvanised
Mounting plate door closer	for TS 5000/TS 4000 with hole pattern according to DIN EN 1154 Supplement 1	029176	according to RAL
Mounting plate door closer	for TS 5000/TS 4000 with hole pattern according to DIN EN 1154 Supplement 1	049185	silver-coloured
Mounting plate door closer	for TS 5000/TS 4000 with hole pattern according to DIN EN 1154 Supplement 1	137725	Stainless steel optic
Mounting plate door closer	for TS 5000/TS 4000 with hole pattern according to DIN EN 1154 Supplement 1	052351	dark bronze

**MOUNTING PLATE LINK ARM**

For TS 4000/TS 2000 for parallel arm installation



Designation	Description	Ident-No.	Colour
Mounting plate link arm	for TS 4000/TS 2000, for parallel arm installation	053319	dark bronze
Mounting plate link arm	for TS 4000/TS 2000, for parallel arm installation	027460	according to RAL
Mounting plate link arm	for TS 4000/TS 2000, for parallel arm installation	053318	silver-coloured

**LINTEL CASING BRACKET**

for TS 5000/TS 4000





# TS 4000 S



---

Designation	Description	Ident-No.	Colour
Lintel casing bracket	for TS 5000/TS 4000	049240	silver-coloured
Lintel casing bracket	for TS 5000/TS 4000	052352	dark bronze
Lintel casing bracket	for TS 5000/TS 4000	104451	according to RAL

## MOUNTING PLATE DOOR CLOSER \*

For TS 5000 and TS 4000 with hole pattern in accordance with DIN EN 1154 Supplement 2



Designation	Description	Ident-No.
Mounting plate *	for TS 5000/TS 4000 with hole pattern according to DIN EN 1154 Supplement 1	083992

---

\* The products designated above may vary in form, type, characteristics, function, or availability depending on the country. Please get in touch with your GEZE contact person if you have any questions.